



Ref No.: BHSCC/REG/2022/F002v5

Dear Parents / Guardians,

INTRODUCTION

Thank you for your interest in the Student Care Centre @ Concord managed by Self Help Groups Student Care Limited.

Big Heart Student Care @ Concord caters to the after-school care needs of students from Concord Primary School. Big Heart Student Care Centre is committed to providing a safe and holistic learning experience for all our students. We provide homework supervision and enrichment activities, with a strong emphasis on character building through the inculcation of Concord Primary School’s core values.

We value our partnership with the school as well as parents and aim to provide quality care and services to our students.

SERVICES & CHARGES

Key components of our programme	Centre Operating Hours
<ul style="list-style-type: none"> • Homework Supervision • Character Building through Values & Virtues Programme • Outdoor activities through Health & Fitness Programme • Enrichment programmes e.g. Reading, STEM, Art & Current Affairs • Holiday Enrichment Activities 	<p>School Term : School Dismissal Time to 7pm (Mondays to Fridays)</p> <p>School Holidays : 7.30am to 7pm (Mondays to Fridays)</p>

*Student Care Fees			
Type of Fees	Cost	GST	Payable Amount (With GST)
Registration Fees	\$ 60.75	\$ 4.25	\$ 65.00
Student Care Fee Deposit			\$ 290.00
3 T-Shirts	\$ 33.65 (\$ 11.22 per piece)	\$ 2.35	\$ 36.00 (\$ 12.00 per piece)
Student Care Fee	\$ 271.03 per month	\$ 18.97	\$ 290.00 per month

*The Student Care Fee Assistance (SCFA) scheme from the Ministry of Social and Family Development (MSF) is available to assist families with financial needs (subject to MSF approval). Our staff will assist eligible students to apply for the subsidy.

Inspiring Minds • Touching Hearts



*School Holiday / Full Day Fee			
Term Break	No. of Days	Block Supplementary Charges	
Ad-hoc full day services (e.g School PTMs, PSLE Oral & Marking)	-	No Charge	
March Holidays	5	\$25.00	
June Holidays	20	Block 1 (Up to 10 days)	Block 2 (More than 10 days)
		\$50.00	\$80.00
September Holidays	5	\$25.00	
November/ December Holidays	30	Block 1 (Up to 15 days)	Block 2 (More than 15 days)
		\$75.00	\$125.00

**The Programme Fee Subsidy (PFS) scheme from the Self Help Groups (SHG) is available to assist families with financial needs. Our staff will assist eligible students to apply for the subsidy.*

TO REGISTER YOUR INTEREST

Interested applicants may submit your interest online via the URL online link or QR code below by **31 October 2022**.

<https://bigheartstudentcare.com/interest/>



Kindly note that both the School and the Student Care will assess the eligibility of the application and only short-listed applicants will be contacted for the official registration.

CONTACT US

For further enquiries, please feel free to contact us at **98552563** from 10am to 4pm (weekdays) or email us at concord@shgstudentcare.com.sg.

Inspiring Minds • Touching Hearts



Student Care Fee Assistance (SCFA) Scheme Eligibility Criteria

The SCFA scheme provides financial assistance for children from lower-income families who enrol in SCFA Administrator Student Care Centres (SCCs). A portion of the SCC monthly fees is subsidised depending on the household/per capita income of the family.

Criteria for eligibility: -

- Both you and your spouse are working at least 56 hours per month.
- Your total monthly family income is \$4,500 or less each month or your monthly household per capita income is \$1,125 or less
- Your child is between 7 – 14 years of age.
- Your child will be attending an MSF-registered Student Care Centre.
- Your child is a Singapore Citizen or Permanent Resident (at least one immediate family member in the same household must be a Singapore Citizen)

If the household has 4 or less family members , please refer to this column:	If the household has 5 or more family members , please refer to this column:	If the monthly student care fees < \$295	If the monthly student care fees ≥ \$295
Gross Household income (\$)	Gross Per-Capita income (\$)	Subsidy (%)	Maximum subsidy (\$)
≤1500	≤375	98	290
1501 - 2000	376 – 500	95	280
2001 - 2200	501 - 550	90	266
2201 - 2400	551 - 600	85	251
2401 - 2600	601 - 650	80	236
2601 - 2800	651 - 700	70	207
2801 - 3000	701 - 750	60	177
3001 - 3200	751 - 800	50	148
3201 - 3400	801 - 850	40	118
3401 - 3500	851 - 875	40	118
3501 - 4000	876 - 1000	30	89
4001 - 4500	1001 - 1125	20	59

The Start-Up Grant of up to \$400 will also be extended to families with gross HHI of up to \$4,500, or PCI of up to \$1,125 for families with five or more family members.

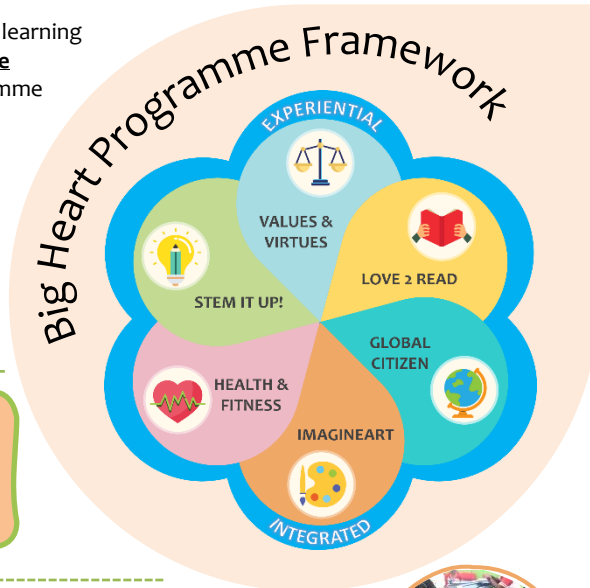
Applicants interested in applying for SCFA may indicate their interest upon registration.

Thank you.

Programmes @ Big Heart Student Care

Big Heart Student Care aims to provide all pupils with integrated and experiential learning opportunities that will enable them to **grow as an individual** and become **valuable members of the community**. Big Heart offers an all-rounded student care programme that consists of the following key components:

- ▶ Homework Supervision
- ▶ Character Building through the Values & Virtues Programme
- ▶ Enrichment Programmes
- ▶ Health & Fitness through Outdoor Games and Sports
- ▶ Meals Provided
- ▶ A Conducive and Homely After-school Care Environment



“There is never a dull moment here at Big Heart Student Care where every day is a fun day!”

VALUES & VIRTUES I am an Ethical Person.

We learn the difference between right and wrong and embody ethics in our daily decisions. We learn about values and virtues, how to recognise and practice them, equipping ourselves with invaluable social skills and emotional intelligence. Through this, we can build a caring and supportive community in which each one of us can flourish.



LOVE 2 READ I Read to Succeed!

We develop a love for reading through a variety of reading, listening, writing & reflection sessions. Through stories, we increase our knowledge, build our vocabulary and enhance our imagination. Through reading, we can also improve our focus and memory and build stronger thinking skills.



STEM IT UP! I am an Inquisitive Explorer.

We learn Science, Technology, Engineering and Mathematical skills through various activities that explore simple concepts around us. We apply our knowledge and skills and learn to problem solve while collaborating in teams to explore and experiment. We become empowered learners with a zeal for exploration and discovery.



GLOBAL CITIZEN I am a Knowledgeable Child.

We learn about our community and the world we live in through discussing and learning about current affairs and news around the world. We develop into well rounded children who are globally informed to make better decisions about our future. We also broaden our literacy and linguistic skills while developing an appreciation for diversity.



HEALTH & FITNESS I lead a Healthy Lifestyle.

We develop mental and physical health through active participation and learn the importance of making better decisions and healthy choices relating to nutrition and life habits. We develop sportsmanship, leadership skills and self-esteem through various activities that promote resilience and teamwork.



IMAGINEART I am a Creative Learner.

We build our creative skills and communication skills that enables us to express ourselves better through various art forms. Through creative arts, we develop a better understanding of ourselves and the world around us. Practicing motor skills and problem-solving skills makes us better self-directed learners with a strong desire to learn and explore.





Daily Schedule @ Big Heart Student Care

Daily Schedule	Primary 1 – 2	Daily Schedule	Primary 3 – 6
1.45pm	Report to Centre	1.45pm	Report to Centre
2.00pm	Lunch / Freshen Up	2.00pm	Lunch / Freshen Up
2.45pm	Rest Time	2.45pm	School Homework Supervision and Revision
3.30pm	School Homework Supervision and Revision	3.45pm	School Spelling Supervision and Revision
4.30pm	Tea Break	4.15pm	Tea Break
5.00pm	Big Heart Programmes (Character Development / Outdoor Activities / Enrichment Programmes)	4.45pm	Big Heart Programmes (Character Development / Outdoor Activities / Enrichment Programmes)
6.00pm	Silent Reading	6.00pm	Silent Reading
6.30pm	Dismissal	6.30pm	Dismissal

Holiday Schedule	Programme
7.30am	Report to Centre / Silent Reading
8.30am	Light Morning Exercise
9.15am	Breakfast
10.00am	Homework Supervision / Revision
11.00am	Big Heart Programmes (Values Booster (Video, Storytelling) / Holiday Learning Journey)
12.00pm	Sharing and Small Group Activities
1.00pm	Lunch
2.00pm	Rest and Freshen Up
3.00pm	Homework Supervision / Revision
4.00pm	Tea Break
4.30pm	Big Heart Programmes (Learning / Enrichment / Aesthetics Programmes)
6.00pm	Sharing Time / Silent Reading / Dismissal
7.00pm	Centre Closes



(Programme schedules may vary for different schools)

Operating Hours

School Term	Monday – Friday	School Dismissal – 7.00pm
School Holidays	Monday – Friday	7.30am – 7.00pm
Public Holidays	Closed	Please note that dates differ from year to year. The closure dates will be made known to you at the beginning of each year in order to facilitate your arrangement for alternative care.
Additional 6 days a year	Closed	

Come join us!

For further enquiries, please contact us via:

 xingnan@shgstudentcare.com.sg

 9772 9974

